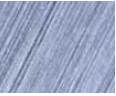



TABLE OF CONTENTS

<u>ABOUT TECHMAR</u>	<u>2</u>
<u>TECHMAR PRODUCTS</u>	<u>3</u>
<u>INTRODUCTION TO SRK/CRK SERIES</u>	<u>4</u>
<u>SRK/CRK PRODUCT LINE</u>	<u>8</u>
<u>INTRODUCTION TO BASIC KIT SERIES</u>	<u>12</u>
<u>BASIC KIT PRODUCT LINE</u>	<u>14</u>
<u>INTRODUCTION TO VCD/VSA SERIES</u>	<u>16</u>
<u>VCD/VSA PRODUCT LINE</u>	<u>20</u>
<u>CHARTS & ILLUSTRATIONS</u>	<u>29</u>
<u>SRK/CRK SERIES</u>	<u>30</u>
<u>BASIC KIT SERIES</u>	<u>34</u>
<u>VCD/VSA SERIES</u>	<u>37</u>





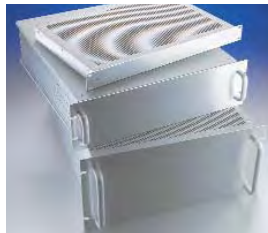
Since 1965, Techmar Enclosures has consistently manufactured and marketed innovative rackmounting electronic packaging systems. All



Techmar components are fabricated from the finest quality materials and machined with precision, meeting or exceeding industry standards.



Offering a wide array of kit options — including rackmount and desktop enclosure combinations of 64 heights and depths — Techmar designs are based upon an erector-set concept featuring interchangeable modular components, punched hole patterns and captive hardware, resulting in a multitude of possible configurations to meet your dimensional and structural requirements. Drawings are available in PDF and AutoCAD formats. Visit our website at www.techmar-enclosures.com. For quality, consistency, intelligent design, flexibility and fast delivery, choose Techmar Enclosures.



SRK/CRK

Seven-eighths Rackmount Kit/Chassis Rackmount Kit

The modular SRK/CRK series offers a wide variety of assembly options without requiring additional drilling or punching.



BK

Basic Kit

Simple economical packaging system offers the same high-quality design and materials, ease of assembly, plus the strength and flexibility of all Techmar enclosures.



VCD/VSA

Variable Chassis Drawer/Variable Stand Alone

Versatile chassis that come equipped with a sturdy 12-piece frame, front and rear panels, solid or perforated sides, solid or ventilated top and bottom covers.



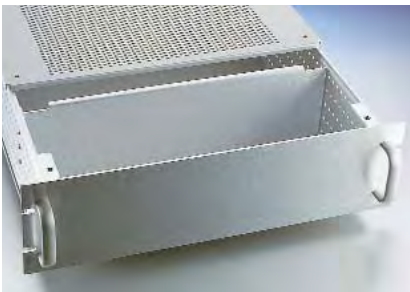


Seven-eighths-spacing Rackmount Kit/Chassis Rackmount Kit

Techmar enclosure designs include interchangeable modular components, punched hole patterns and captive hardware, resulting in a multitude of possible configurations to meet your dimensional and structural requirements. The durable SRK/CRK series aluminum enclosures feature a 7/8" vertical and 1/2" horizontal side frame hole pattern. Double bends in side frames and heavy-duty aluminum alloy materials increase strength and rigidity.

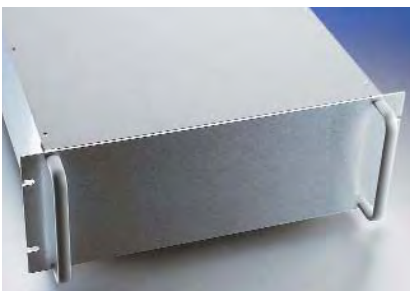
SRK/CRK KIT FEATURES

The modular SRK/CRK series offers a wide variety of assembly options without requiring additional drilling or punching. These durable aluminum enclosures feature unique 7/8" vertical spacing between rows of assembly holes on double bent side frames (half the standard EIA rackmounting height increment) to provide horizontal uniformity. All 28 combinations of four depths and seven heights are stocked for immediate shipping.



SRK Standard Parts

- Front Panel (FP) .125" thick
- Oval Section Handles (OSH), clear anodized
- Side Frames (SF-SE) with 7/8" vertical hole spacing
- Heavy-duty Mounting Panel (HMP)
- Perforated Aluminum Non-sliding Covers (PANC)



CRK Standard Parts

Similar to the SRK model with several exceptions:

- Flanged Full Bottom Plate (FBP) replaces Perforated Aluminum Non-sliding Cover.
- The CRK is not supplied with a top cover.

Materials (all aluminum alloys)

- 6061-T6 front panels, panel ears
- 5052-H32 side frames, mounting panels, rear panels, perforated covers and solid covers
- 6063-T5 handles

Surface

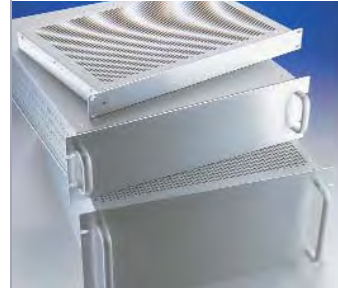
Horizontal grain front panels; etched and grained handles

Finish

Clear anodized covers; clear or black anodized handles; clear chem film (iridite) on other parts

Hardware

Stainless steel hardware included with each kit or part.



HOW TO ORDER

SRK & CRK Kit Selection

Using the dimensional chart, select the chassis that is appropriate for your project. As an aid, refer to the Techmar price list, which clearly defines all standard enclosures. Create your own unique chassis by including options and substitutions in your part number.

Order Codes

Order codes are combinations of part names composed of acronyms and dimensions linked together by dashes. The following section shows how to create order codes for kits in both the SRK and CRK series.

Sample SRK Order Code

SRK-7H-19D

Sample CRK Order Code with Options

CRK-3H-12D-DFP-PANC-OSH-BA

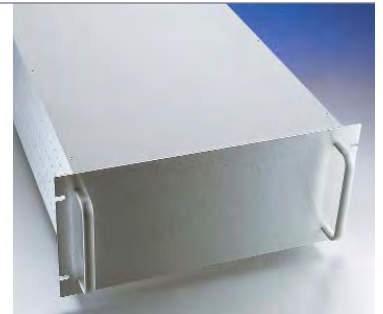
SRK/CRK KIT OPTIONS



The SRK/CRK series come in seven heights and four depths as outlined below. Different option codes may be used to modify any standard kit.

Available Heights and Depths:

KIT DASH NO.	EIA EQUIV. RACK UNITS	FRONT PANEL HEIGHT
-3H	2	3.47
-5H	3	5.22
-7H	4	6.97
-8H	5	8.72
-10H	6	10.47
-12H	7	12.22
-14H	8	13.97



DEPTHS

-12D	-15D	-19D	-24D
------	------	------	------

Options & Substitutions

Standard designated rackmount kits are not necessarily limited and may be modified utilizing substitutions as illustrated below. Techmar rackmount products are designed to meet EIA specifications.

Option	Order Code
3/16"-thick Front Panel	-3/16
Dropdown Front Panel	-DFP
Full Bottom Plate (bottom cover excluded)	-FBP
Oval Section Handles, Black Anodized	-OSH-BA
Solid Aluminum Non-sliding Covers (replaces 1 or 2 perforated covers)	-1:SANC
	-2:SANC
Perforated Aluminum Hook-on Covers (replaces 1 or 2 perforated covers)	-1:PAHC
	-2:PAHC
Solid Side Frames	-SF-SE-S



OVERVIEW OF STANDARD SRK/CRK PARTS

These are the standard parts used in most SRK and CRK kits. Complete descriptions of each part will be covered on the following pages. With a variety of options available for customizing rackmount kits, it may prove easier to order the components individually. Please note that except for slides, which are sold in pairs, all parts are sold as individual units.



Oval Section Handles

(OSH)

Streamlined rounded design eliminates bothersome sharp edges. Available in clear or black anodized.



Front Panel

(FP)

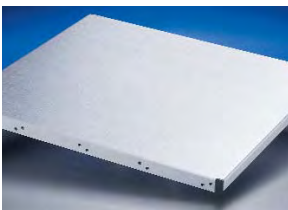
Techmar EIA standard 19" wide, 1/8"-thick notched. Front Panels are available in seven EIA heights.



Side Frame-Seven-Eighths

(SF-SE)

Side Frames have drilled assembly holes with vertical center-to-center spacing of 7/8" to facilitate component mounting and ventilation. Also available solid without perforations.



Full Bottom Plate

(FBP)

Providing a sturdy assembly base for heavy components, the flanged Full Bottom Plate features side frame mounting for added rigidity.



Covers

(PANC) (SANC) (PAHC)

For ventilation, interior component protection or quick access, covers are available perforated (PANC), solid (SANC) or perforated hook-on (PAHC).

SRK/CRK PRODUCT LINE

Side Frame-Seven-Eighths (SF-SE)



Side Frames have drilled assembly holes with vertical center-to-center spacing of 7/8". This dimension is one half the EIA increment and creates uniform spacing, facilitating assembly of internal mounting components. Also available solid without perforations.

Material: 5052-H32 aluminum alloy

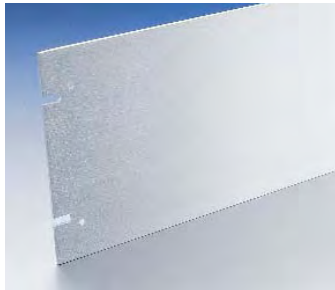
Thickness: .090"

Surface: Horizontal grain

Finish: Clear chem film (iridite)

Hardware: Installed stainless steel captive nuts

Front Panel (FP)



Techmar EIA standard 19"-wide notched Front Panels are available in seven heights for immediate shipping.

Material: 6061-T6 aluminum alloy

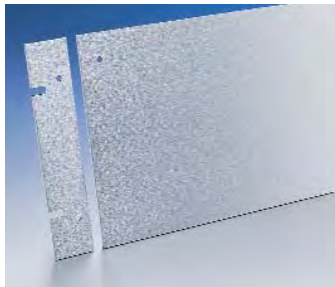
Thickness: 1/8" standard, 3/16" optional

Surface: Horizontal grain

Finish: Clear chem film (iridite)

Hardware: Stainless steel screws and washers

Dropdown Front Panel (DFP)



Dropdown Front Panels consist of two panel ears that assemble to side frames, and a pin-hinged main panel. The main panel is latched with decorative thumbscrews and supported by lanyards when open. Stocked in EIA heights from 3.47" to 13.97."

Material: 6061-T6 aluminum alloy

Thickness: 1/8"

Surface: Horizontal grain

Finish: Clear chem film (iridite)

Hardware: Stainless steel screws, washers, decorative thumbscrews and lanyards



SRK/CRK PRODUCT LINE

Oval Section Handles (OSH)



Streamlined, solid OSH are standard-issue handles for SRK/CRK kits. Five different sizes of OSH are stocked according to their hole center dimensions. Finishes are anodized clear or black. OSH handles mount to the front panel and side frames with no visible hardware.

Material: 6063-T5 aluminum alloy

Surface: Deep etched

Finish: Clear or black anodized

Hardware: Stainless steel screws and washers

Heavy-duty Mounting Panel (HMP)



HMPs function as rear panels and may also be utilized as interior mounting panels for internal components.

NOTE: To assemble the HMP vertically with a Full Bottom Plate (FBP), order the HMP one size smaller than the height of the kit.

Material: 5052-H32 aluminum alloy

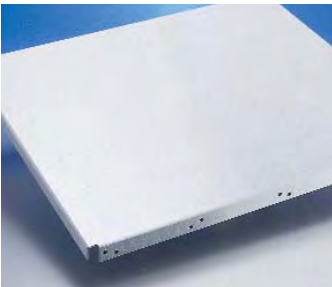
Thickness: .090"

Surface: Horizontal grain

Finish: Clear chem film (iridite)

Hardware: Installed stainless steel captive nuts, oval head screws and washers

Full Bottom Plate (FBP)



Typically used as assembly bases for heavy components, Full Bottom Plates have 90-degree flanges that connect to side frames using screws and captive nuts. Attach the FBP with flanges down or with flanges up for maximum interior height. FBPs are stocked in four depths: 12", 15", 19" and 24".

Material: 5052-H32 aluminum alloy

Thickness: .090"

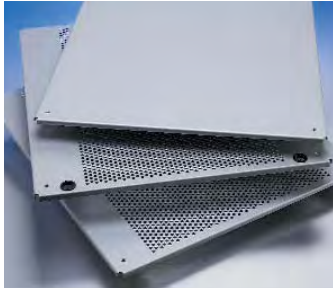
Surface: Grained

Finish: Clear chem film (iridite)

Hardware: Installed stainless steel captive nuts, screws and washers

SRK/CRK PRODUCT LINE

Covers (PANC) (SANC) (PAHC)



Techmar stocks three types of covers to provide ventilation and protection of internal components.

Material: 5052-H32 aluminum alloy

Thickness: .063"

Surface: Grained and light etched

Finish: Clear anodized

Hardware: Stainless steel flathead screws

- *Perforated Aluminum Non-sliding Covers (PANC)*

PANCs have flanges on all four edges that enhance the strength of the enclosure. Covers screw down to tabs of side frames at each corner.

- *Solid Aluminum Non-sliding Covers (SANC)*

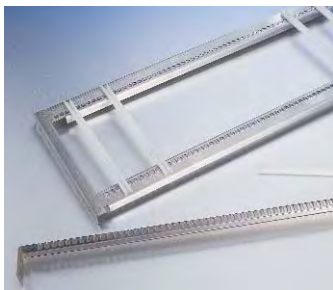
Same as PANC but with no perforations.

- *Perforated Aluminum Hook-on Covers (PAHC)*

PAHCs are secured by hooks at one end of the enclosure and feature thumbholes at the opposite end, enabling quick access to chassis interior.

RACKMOUNT ACCESSORIES

Quarter-inch Card Cage Kits (QCC)



- Quarter-inch spacing between cards increases mounting options.
- Card cages assemble for top, front and rear loading in any Techmar SRK/CRK series chassis.
- Connectors can be mounted either above or below hole flanges on connector rails; the rails can be attached to side frames with the flange up or down.
- Slots in the connector flanges let you assemble card connectors of any length without additional drilling.

NOTE: For front-loading cards, you may want to select a Dropdown Front Panel. For 4-1/2" high front-loading cards using side frames (SF-SE, 7/8" spacing), additional mounting holes must be drilled.

SRK/CRK PRODUCT LINE

CARD CAGE PARTS

The following lists available parts and their order codes for Techmar Quarter-inch Card Cages.

Material: QGF Guide Frames – 18 gauge stainless steel, QCR Connector Rails – 16 gauge stainless steel

Finish: 100-grit horizontal

Hardware: Stainless steel captive nuts installed, screws and washers, SIG Snap-in Guides

Mounting Bars (MB)



Mounting Bars can be installed to support and position subassemblies. Holes located at Mounting Bar ends align with the assembly holes in side frames.

Material: 6061-T6 aluminum alloy

Surface: Deep etched

Finish: Clear chem film (iridite)

Hardware: Stainless steel pan head screws and washers

Slides



Slides include your choice of smooth action, heavy weight-accommodating ball-bearing models or the economical solid-bearing series. Ordered in pairs, they assemble to side frames with flat mounting adapters, which are provided. Please use the slide selection chart to order.

▪ **QDLS-SB Series:**
Quick Disconnect Locking Slides – Solid Bearing

Material: Cold-rolled steel
Surface: Etched in Chromite

Height: 1.69"
Finish: Poxylube® coated

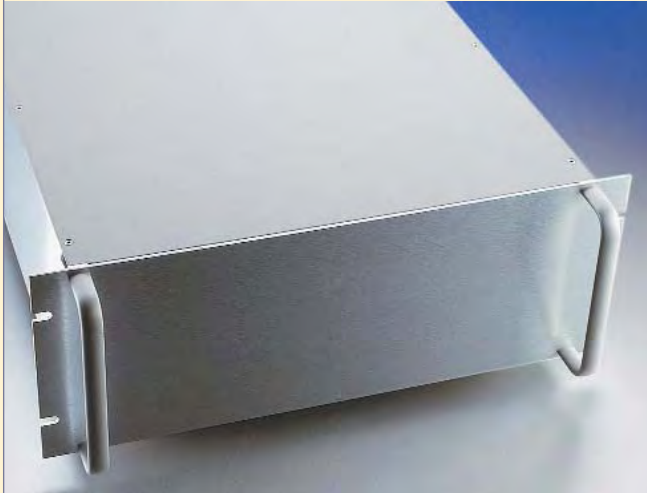
Thickness: .291" overall
Hardware: Adapters and screws

▪ **QDLS-BB Series:**
Quick Disconnect Locking Slides – Ball Bearing

Material: Cadmium plated steel
Thickness: .38" Overall

Height: 3.25" (should not be
Surface: Iridite Dipped

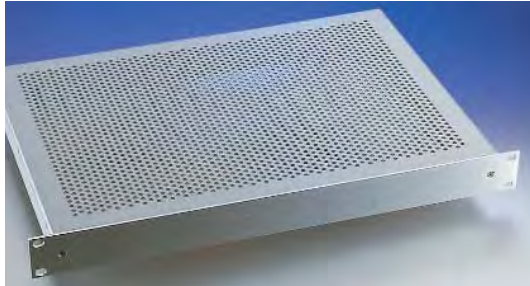
used with 3.47" side
Hardware: Adapters and screws
frames)



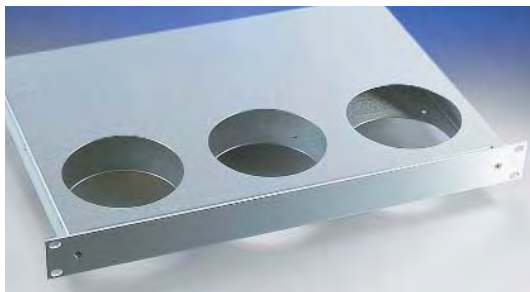
Basic Kit Chassis Drawer

The Basic Kit is a simple, rugged, economical packaging system offering excellent materials and quick easy assembly. Lower in price, these sturdy aluminum kits feature rear panels without flanges for easy machining.

Also available, .090"-thick chassis base plates and .090"-thick solid covers can be ordered separately.



1U Basic Kit



1U Basic Kit Fan Tray

BASIC KIT FEATURES

This simple economical packaging system offers the same high-quality design and materials, ease of assembly, plus the strength and flexibility of all Techmar enclosures. When ordering kits or parts, use the method discussed in the SRK/CRK section of the catalog.

HOW TO ORDER

BK Standard Components

(For heights 3.47" to 12.22" and depths 8", 12", 18", 24")

- Basic Front Panel (BFP), .125" thick
- Basic Side Panels (BSP), solid without perforations
- Basic Rear Panel (BRP), without flanges for easy machining
- Basic Top and Bottom Covers (BTBC), solid without perforations
- Oval Section Handles (OSH), clear anodized (same as SRK/CRK)

BK Options

Basic Kit modification may be accomplished using the following substitutions

- Black Anodized Handles – BAH
- Side panels With assembly Hole Rows – WHR
- .090"-thick Top/Bottom Cover – 1:BTBC-.090
- Perforated Top/Bottom Cover – 1PC
- Perforated Top/Bottom Covers – 2PC
- Chassis Base Plate – CBP

Serving as a rigid assembly base for heavier components, the Chassis Base Plate is a flanged .090"-thick recessed interior mounting shelf that connects to the side panels using screws and captive nuts.

Note: Usage of CBP results in an internal enclosure height loss of approximately 1". If solid sides panels are selected, drilling is required.

BASIC KIT PRODUCT LINE

1U Basic Kit (1U BK)

The 1U Basic Kit reflects the diminutive trend in microelectronics and features a fan tray option developed as an effective cooling solution. The 1U Basic Kit is comprised of components specific to this chassis only. Parts for the standard BK-1H-12D solid enclosure without perforations include:

- Basic Front Panel (BFP-1H), .125" thick
- Basic Rear Panel (BRP-1H)
- Top Cover (TC-12D), solid without perforations
- Bottom Panel (BP-1H-12D), solid

1U BK Kit Options

- Perforated Top Cover – PC
- Perforated Bottom Panel – PBP
- Perforated Top Cover, Perforated Bottom Panel – PC-PBP

1U BK Fan Tray Kit

Providing maximum ventilation, this version of the 1U BK includes top and/or bottom panels with three or six fan-mounting holes.

Basic Side Panels (BSP)



Basic Side Panels are available solid without perforations or with optional assembly hole rows for component mounting.

Material: 5052-H32 aluminum alloy

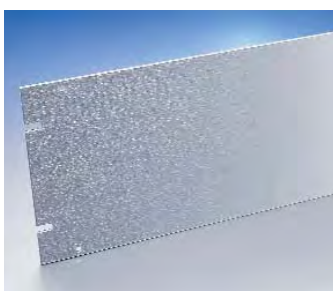
Thickness: .090"

Surface: Horizontal grain

Finish: Clear chem film (iridite)

Hardware: Installed stainless steel captive nuts

Basic Front Panel (BFP)



Techmar EIA standard 19"-wide notched Basic Front Panels are available in six heights for immediate shipping.

Material: 6061-T6 aluminum alloy

Thickness: 1/8"

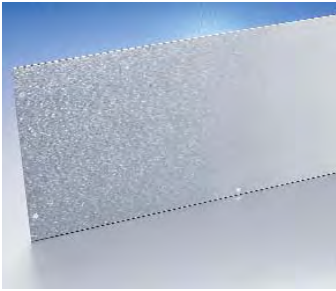
Surface: Horizontal grain

Finish: Clear chem film (iridite)

Hardware: Stainless steel screws and washers

BASIC KIT PRODUCT LINE

Basic Rear Panel (BRP)



Available in six heights, Basic Rear Panels are manufactured without flanges for easy machining.

Material: 5052-H32 aluminum alloy

Thickness: .090"

Surface: Horizontal grain

Finish: Clear chem film (iridite)

Hardware: Stainless steel screws and washers

Basic Kit Top and Bottom Covers (BTBC)



Three types of Basic Kit Covers provide ventilation and protection of internal components. For solid covers without perforations, choose from the standard .063"-thick BTBC or the optional .090"-thick BTBC-.090. If ventilation is desired, select the BTBC-PC.

Material: 5052-H32 aluminum alloy

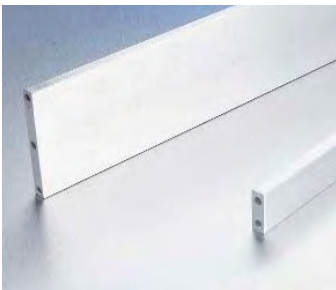
Thickness: .063" and .090"

Surface: Grained and light etched

Finish: Clear anodized

Hardware: Stainless steel flathead screws

Basic Kit Mounting Bars (BMB)



Mounting Bars can be installed to support and position subassemblies. Holes located at Mounting Bar ends align with the assembly holes in side frames.

Material: 6061-T6 aluminum alloy

Surface: Deep etched

Finish: Clear chem film (iridite)

Hardware: Stainless steel screws and washers



Variable Chassis Drawer / Variable Stand Alone

The versatile VCD/VSA chassis are available in black or silver with a variety of options, including hinged panels and a fully adjustable card cage. The VCD/VSA models permit conversion from the rack to the desktop and

facilitate machining as a result of flat-panel construction.

VCD KITS

The Variable Chassis Drawer rackmount kit offers larger interior working space with its sturdy 12-piece frame construction.

VSA KITS

The Variable Stand Alone kit is a desktop-designed chassis consisting of the same construction as the VCD kit.



VCD KITS STANDARD PARTS

Variable Chassis Drawer (VCD)

These components are the standard parts used in our VCD series. Each part is outlined on the following pages along with various options for customizing your enclosure.

Components include:

- SFP Standard Front Panel
- TPF Twelve Piece Frame
- SSP Structural Side Panels
- RFBOBP Rear Panel
- T/BC Top/Bottom Covers
- DCH Die Cast Handles

KIT SELECTION



HOW TO ORDER BY KIT

Although the scheme for ordering kits initially may seem complex and daunting, it effectively conveys a variety of kit options. We're confident that you'll quickly get the hang of our alphabetic and numeric acronyms.

1. Rackmount or Stand Alone? If rackmount, start your kit code with the letters VCD (Variable Chassis Drawer). If stand alone, start with the letters VSA (Variable Stand Alone).
2. What height? Choose any of the EIA panel heights from 3.47" to 13.97". Translate to the whole-number code 3, 5, 7, 8, 10, 12 or 14. Add a dash before the number and a letter H after it. Example: Your kit code could become VCD-10H.
3. What front-to-back depth? Choose any of the four depths — 10,13,17 or 22 inches. Add a dash and the letter D for Depth. Your kit develops: VCD-10H-17D.
4. What color selection? Components are available in clear-coated brushed aluminum or black anodized. Combinations may be utilized to achieve a two-tone effect. Example of codes: CF/H=Clear Frame & Handles, BF/H=Black Frame & Handles, CP=Clear Panels, BP=Black Panels.

DESIGNATING KIT SUBSTITUTIONS & DELETIONS

- *The addition of the following codes to VCD/VSA part numbers permits enclosure modification.*

- BHFP: Substitute Bottom-Hinged Front Panel in place of an SFP Standard Front Panel.
- OFF: If kit is a VSA, the RFBOBP, Recessed Front Panel, is replaced by an OFF, Outside Front Panel.
- NH: No Handles.
- NFP: No Front Panel. Other parts may be omitted by using their part codes with an N in front.

- *Kit dash codes for TOP/BOTTOM COVER Substitutions*

- 1:T/BC.OTP: One Top/Bottom Cover, One Third Perforated, replaces one of the T/BC.P fully Perforated covers on the VCD.
 - 2:T/BC.OTP: Replaces both covers on the VCD.
 - 1:T/BC.NP: One Top/Bottom Cover, Non-Perforated, replaces one of the T/BC.P fully Perforated covers on the VCD or one of the T/BC.OTP One-Third Perforated covers on the VSA.
 - 2:T/BC.NP: Replaces both covers on the VCD or VSA.
 - 1 T/BC.P: One Top/Bottom Cover, fully Perforated, replaces one of the T/BC.OTP One Third Perforated covers on the VSA.
 - 2 T/BC.P: Replaces both covers on the VSA.
- (Two of the "substitute 1" dash codes can be added to get two covers different from each other.)

- *Kit dash codes for CHASSIS BASE ASSEMBLY*

- 1:CBA.O: One Chassis Base Assembly (recessed internal plate) for use with Standard Front Panels and Outside Front Panels.
Replaces bottom cover on the VCD.
- 1:CBA.R: One Chassis Base Assembly for use with RFBOBP, Recessed Front or Rear Panels.
Replaces bottom cover on the VCD/VSA.

- *Kit dash code for TWELVE PIECE FRAME OPTION*

- TPF.S.H.: Twelve Piece Frame for use with Slides and Handles.

- *Kit dash codes for Colors*

To designate color scheme add two of the following color dash codes:

- CF/H: Clear Frame and Handles
- BF/H: Black Frame and Handles
- CP: Clear Panels
- BP: Black Panels

VCD/VSA PRODUCT LINE



CARD CAGE PARTS

▪ Card Guide Rails (CGR)

Techmar offers four card guide rails to accommodate your choice of .20" or .25" connector pitches. The CGR series includes adjustable brackets, which permit the cage to be assembled for front, back, top or bottom loading. By choosing the appropriate length of card guide, you can accommodate any card size that will fit within the enclosure space. In the following table, dot H designates Holes and dot S Slots.

PART CODE	GUIDE	SPACING	MULTIPLES OF:
CGR.H-.20			
CGR.S-.20			
CGR.H-.25			
CGR.S-.25			

▪ Card Guides (CG)

Techmar offers card guides in several lengths with a choice of two sizes of slot depths. Both types have standard .075"-wide slots and are made from tough, natural-colored nylon.

GUIDE PART CODE:	CG4.S	CG4.5.S	CG6.S	CG4.5.D	CG6.5.D	CG8.D	CG10.D
GUIDE LENGTH:	4	4.5	6	4.5	6.5	8	10
PEGS PER GUIDE:	2	2	2	2	2	3	3
SLOT DEPTH:	S in part code = Shallow = .075"			D in part code = Deep = .125"			

Where guides have 2 pegs, 2 each CGR.H and 2 each CGR.S are needed. Where guides have 3 pegs, 2 each CGR.H and 4 each CGR.S are needed.

▪ Card Connector Rails (CCR)

These are made of brushed stainless steel and are available in two pitch spacings: .20" and .25". They are furnished with brackets, which allow horizontal and vertical adjustment to accommodate your choice of card connectors.

PART NUMBER:	CCR.20	CCR.25
CONNECTOR SCREW SLOT SPACING:	0.20"	0.25"

The following pages are various parts and accessories that may be used when building your Variable Chassis Drawer and Variable Stand Alone enclosure.

▪ Card Cage Parts & Accessories

In addition to the many options that make up the VCD/VSA kits, we offer General Purpose Card Cages that permit continuous adjustment and variability to accommodate a wide range of circuit cards.

GPCC.NBP KIT General Purpose Card Cage with No Back Plane

Components include: CGR.H-.25 (2 ea.)
 CGR.S-.25 (2 ea.)
 CCR.25 (2 ea.)
 CCB (12 ea.)
 (GPCC.NBP also available with .20" spacing)

VCD/VSA PRODUCT LINE

The following kit components may be used when customizing your VCD or VSA enclosure.

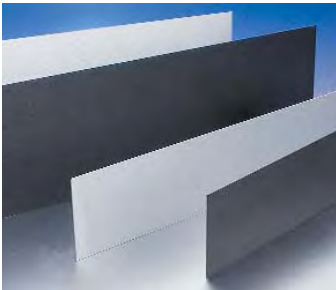
Bottom Hinged Front Panel (BHFP)



- *Option for VCD/VSA*

Consists of a 16.05"-wide Bottom Hinged section and two Flat Panel Ears for rackmount or trimmers for stand alone. Latch assemblies and lanyards included.

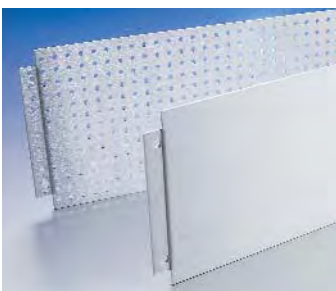
Side Covers (SC)



- *Standard for VSA only*

Side Covers effectively add decorum and protection to the VSA desktop enclosure. Material is 6061-T6 aluminum alloy. Surface is grained and light etched. Finish clear or black anodized.

Structural Side Panels (SSP)

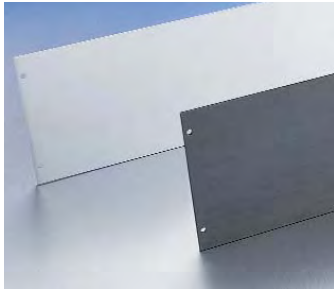


- *Standard for VCD/VSA*

The SSP Structural Side Panels are perforated with a hole center spacing of .4375 (7/16") both horizontally and vertically. Material is .090"-thick 5052-H32 aluminum alloy. Finish is clear chemical film. Also available solid without perforations, SSP.NAH

VCD/VSA PRODUCT LINE

Recessed Front/Back/Outside Back Panel (RFBOBP)



Standard Rear Panel for VCD

Standard Recessed Front Panel and Rear Panel for VSA

The unique RFBOBP may be utilized and configured as either a protective Recessed Front Panel or Recessed Back Panel and also as a standard Outside Back Panel. May be used in conjunction with an SFP or BHFP.

Material: .125"-thick 6061-T6 aluminum alloy

Top/Bottom Covers (T/BC)



T/BC.P standard for VCD

T/BC.OTP standard for VSA

T/BCs are offered in three distinct styles: Perforated (T/BC.P), One Third Perforated (T/BC.OTP) or Non-Perforated (T/BC.NP). All have side flanges that assemble into frame member grooves.

Cover material is .063"-thick 5052-H32 aluminum alloy. Surface is grained and light-etched.

Finish: Clear or black anodized

VCD/VSA PRODUCT LINE

Transverse Mounting Bars and Angles



- Transverse Mounting Bars – TMB
- Transverse Mounting Angles – TMA

The TMB Mounting Bars and TMA Mounting Angles can be installed to support and position subassemblies and components within the chassis.

Material: 6061-T6 aluminum alloy

TMB part codes

TMB-.25x.75
TMB-.25x1.5
TMB-.25x2.0
TMB-.5x.75

TMA part codes

TMA-.25x.75x1.25
TMA-.25x1.25x1.25
TMA-.25x1.50x1.50

Slides



Slides include your choice of smooth action, heavy weight-accommodating ball-bearing models or the economical solid-bearing series. Ordered in pairs, they assemble to side frames with flat mounting adapters, which are provided. Please use the slide selection chart to order.

- *QDLS-SB Series: Quick Disconnect Locking Slides – Solid Bearing*

Material: Cold-rolled steel
Thickness: .291" overall
Surface: Etched in Chromite
Height: 1.69"
Finish: Poxylube® coated
Hardware: Adapters and screws

- *QDLS-BB Series: Quick Disconnect Locking Slides – Ball Bearing*

Material: Cadmium plated steel
Thickness: .38" overall
Surface: Iridite dipped
Height: 3.25" (should not be used with 3.47" side frames)
Hardware: Adapters and screws

VCD/VSA PRODUCT LINE

VCD Kits



The following is a list of standard parts used in the Variable Chassis Drawer. Optional parts are interchangeable to customize your enclosure for various applications.

Components include:

- SFP Standard Front Panel
- TPF Twelve Piece Frame
- SSP Structural Side Panels
- RFBOBP Rear Panel
- T/BC.P Top/Bottom Covers, Perforated
- DCH Die Cast Handles

Back Panel with Fan Cutouts (BP.FC)



- *Option for VCD/VSA*

Optional Back Panels for fan mounting are available featuring fan holes 4.3" square with one, two or three cutouts located in the center, side, adjacently or separated.

Material: .125"-thick 6061-T6 aluminum alloy

Vertical/Horizontal Mounting Panel Assembly (V/H.MPA)



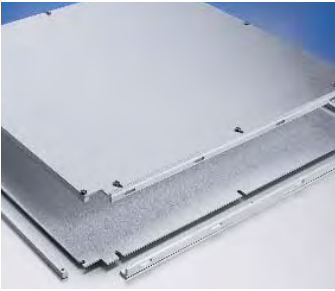
- *Accessory for VCD/VSA*

Similar in design to the CBA, the smaller V/H.MPA mounting panels can be oriented either vertically or horizontally.

Material: .090"-thick 6061-T6 aluminum alloy

VCD/VSA PRODUCT LINE

Chassis Base Assembly (CBA.O) (CBA.R)



- *CBA.O Option for VCD only*
- *CBA.R Option for VCD/VSA*

This heavy-duty .090"-thick interior mounting plate effectively supports electronic components utilizing separate edge reinforcing angle bars that bolt to the VCD enclosure's Structural Side Panels. Flat-panel construction without bent flanges facilitates machining. The CBA.O accommodates usage of the Standard Front Panel while the CBA.R supports usage of a Recessed Front Panel. Chassis Base Assemblies are available in all of the four VCD enclosure depths.

Materials: 6061-T6 aluminum alloy

Die Cast Handles (DCH)



- *Standard for VCD/VSA*

Elegant DCH, Die Cast Handles are available in five heights painted silver or black.

Card Guides (CG)



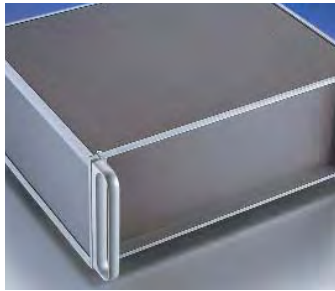
- *Accessory for VCD/VSA*

Techmar offers card guides in several lengths with a choice of two sizes of slot depth. Both types have standard .075"-wide slots and are made from tough, natural-colored nylon.



VCD/VSA PRODUCT LINE

VSA Kits



Variable Stand Alone

VSA is a stand alone kit for use on a desktop that utilizes most of the same parts as the VCD Kit with a few exceptions. The components used in the standard VSA Kit are as follows:

- TPF Twelve Piece Frame
- SSP Structural Side Panels
- RFBOBP Rear Panel
- T/BC.OTP Top/Bottom Covers, One Third Perforated
- SC Side Covers
- DCH Die Cast Handles
- SORF Rubber Feet

Recessed Front/Back/Outside Back Panel (RFBOBP)



Standard Recessed Front Panel and Rear Panel for VSA.

Outside Front Panel (OFP)



- *Option for VSA only*
The OFP is a non-recessed front panel for the VSA.

Front Trimmers (FT)



- *Option for VSA only*
Trim strips of aluminum alloy used for Panel Ear replacement on the VSA chassis when using a Bottom Hinged Front Panel.

Die Cast Handles (DCH)



- *Standard for VCD/VSA*
Elegant DCH, Die Cast Handles are available in five heights painted silver or black.

VCD/VSA PRODUCT LINE

Twelve Piece Frame (TPF)

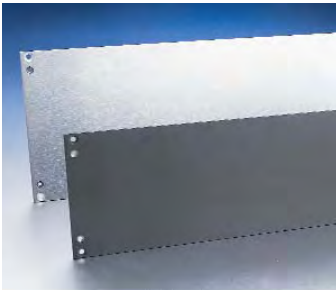


- *Standard for VCD/VSA*

The VCD's individual Twelve Piece Frame members can be ordered separately and are available painted either black or silver. Material is 6063-T5 aluminum alloy. Painted finish is epoxy polyurethane. Hardware is stainless steel.

<u>Part Code</u>	<u>Part Name</u>
LFM	Longitudinal Frame Member
TFM	Transverse Frame Member
TFMF.BHFP	Transverse Frame Member for Bottom Hinged Front Panel
VFM.B	Vertical Frame Member Back
VFM.BS	Vertical Frame Member Back for Slides
VFM.F	Vertical Frame Member Front
VFM.F-NH	Vertical Frame Member Front for No Handles & Recessed Front Panel

Standard Front Panel (SFP)



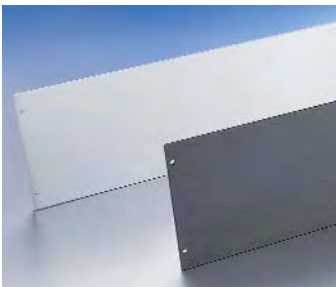
- *Standard for VCD only*

These are standard EIA 19"-wide Front Panels with assembly holes.

Thickness is 1/8", with optional 3/16" available.

Material: 6061-T6 aluminum alloy

Recessed Front/Back/Outside Back Panel (RFBOBP)



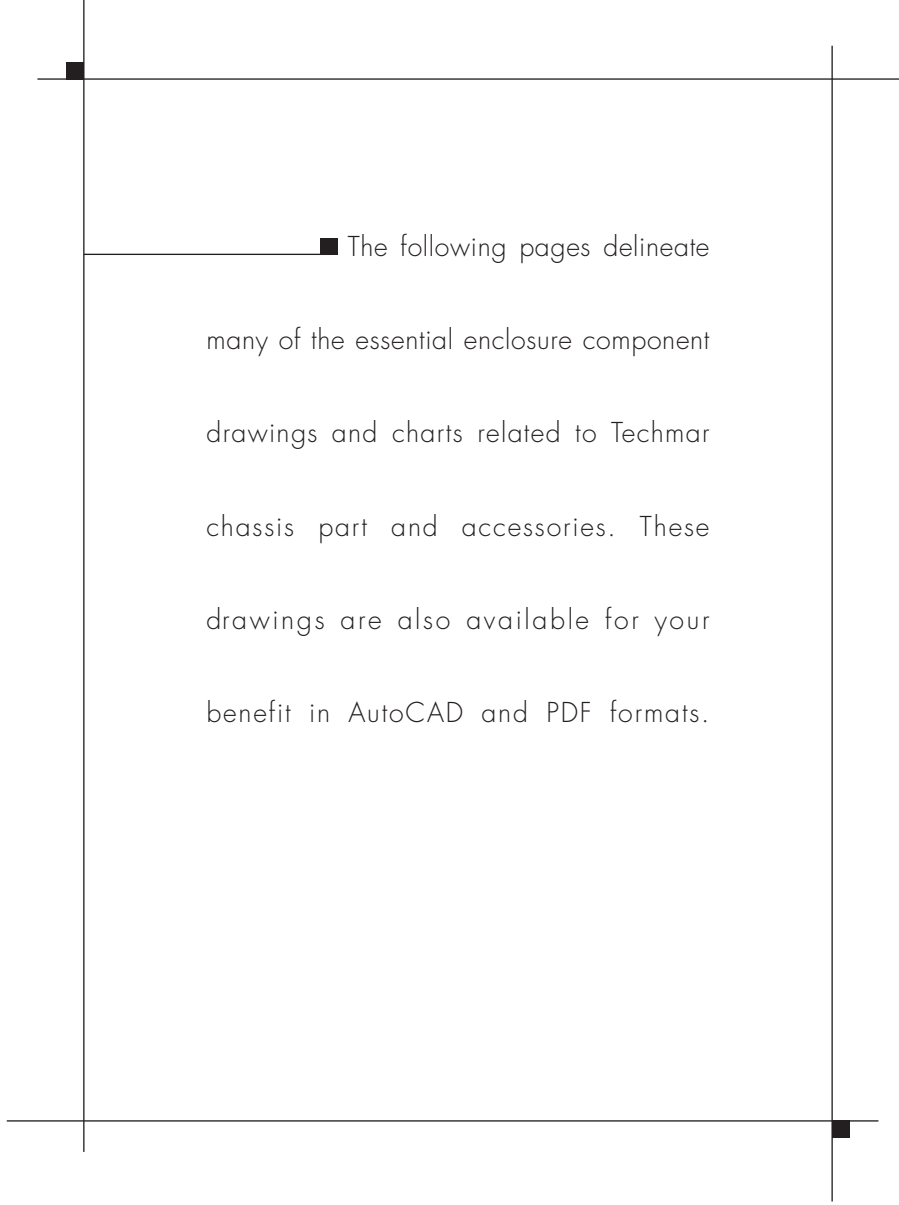
- *Standard Rear Panel for VCD*

- *Standard Recessed Front Panel and Rear Panel for VSA*

The unique RFBOBP may be utilized and configured as either a protective Recessed Front Panel or Recessed Back Panel and also as a standard Outside Back Panel. May be used in conjunction with an SFP or BHFP.

Material: .125"-thick 6061-T6 aluminum alloy





■ The following pages delineate many of the essential enclosure component drawings and charts related to Techmar chassis part and accessories. These drawings are also available for your benefit in AutoCAD and PDF formats.

SRK & CRK Series Height & Width Dimensions

Kit Dash No.	EIA Equiv. Rack Units	Front Panel Height Space	Usable Front Panel	Front Panel Thickness	Mounting Panel Height	Side Frame Height	Handle Hole Centers
-3H	2	3.47	16.37x3.15	.125	3.09	3.15	2.00
-5H	3	5.22	16.37x4.90	.125	4.84	4.90	3.00
-7H	4	6.97	16.37x6.65	.125	6.59	6.65	4.56
-8H	5	8.72	16.37x8.40	.125	8.34	8.40	6.44
-10H	6	10.47	16.37x10.15	.125	10.09	10.15	6.44
-12H	7	12.22	16.37x11.90	.125	11.84	11.90	9.00
-14H	8	13.97	16.37x13.65	.125	13.59	13.65	9.00

Maximum Inside Height & Width Available in SRK & CRK Enclosures

Height Dash No.	Empty Height	With FBP (Flanges Up)	Max Width
-3H	3.15	2.96	16.37
-5H	4.90	4.71	16.37
-7H	6.65	6.46	16.37
-8H	8.40	8.21	16.37
-10H	10.15	9.96	16.37
-12H	11.90	11.71	16.37
-14H	13.65	13.46	16.37

SRK/CRK Depths: 12.00,15.00,19.00,24.00

SRK/CRK Side Frames (also available solid without assembly holes)

Part Number Development

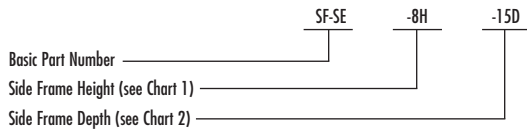


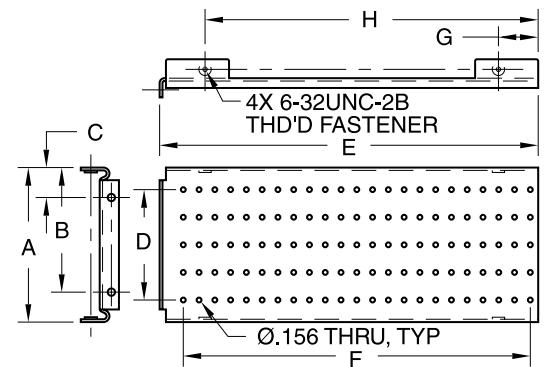
Chart 1, Frame Height Dims

Dash No.	A	B	C	D
-3H	3.15	2.575	.575	1.75
-5H	4.90	3.950	.950	3.50
-7H	6.65	5.605	1.045	5.25
-8H	8.40	7.420	.980	7.00
-10H	10.15	8.294	1.856	8.75
-12H	11.90	10.450	1.450	10.50
-14H	13.65	11.325	2.325	12.25

Chart 2, Frame Depth Dims

Dash No.	E	F	G	H
-12D	12.00	11.00	1.260	10.560
-15D	15.00	14.00	1.260	13.560
-19D	19.00	18.00	.715	18.085
-24D	24.00	23.00	1.260	22.560

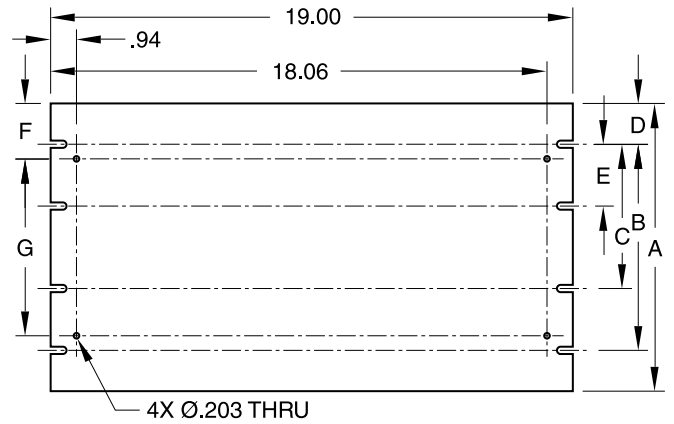
SRK/CRK Side Frame



SRK/CRK Front Panel

Part No.	A	B	C	D	E	F	G
FP-3	3.47	3.000	N/A	.235	N/A	.735	2.000
FP-5	5.22	2.250	N/A	1.484	N/A	1.110	3.000
FP-7	6.97	4.000	N/A	1.484	N/A	1.204	4.562
FP-8	8.72	5.750	N/A	1.484	N/A	1.141	6.437
FP-10	10.47	7.500	5.250	1.484	2.250	2.016	6.437
FP-12	12.22	9.250	5.750	1.484	3.500	1.610	9.000
FP-14	13.97	11.000	7.000	1.484	4.000	2.484	9.000

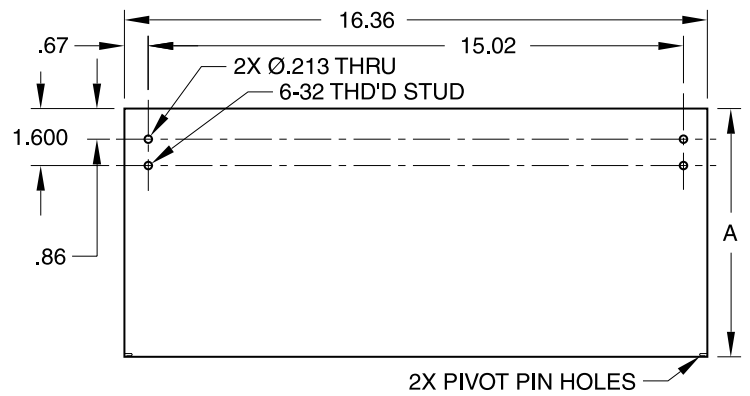
SRK/CRK Front Panel



SRK/CRK Drop Down Front Panel

Part No.	A
DFP-3	3.47
DFP-5	5.22
DFP-7	6.97
DFP-8	8.72
DFP-10	10.47
DFP-12	12.22
DFP-14	13.97

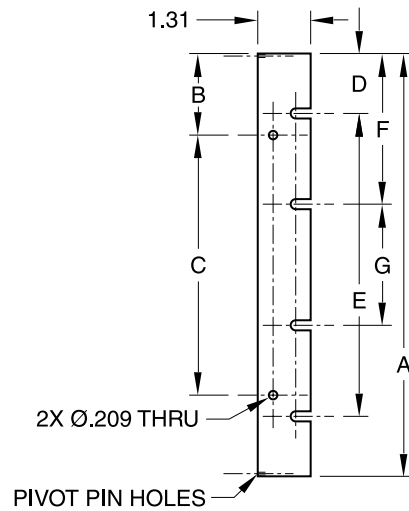
SRK/CRK Drop Down Front Panel



SRK/CRK Flat Panel Ear

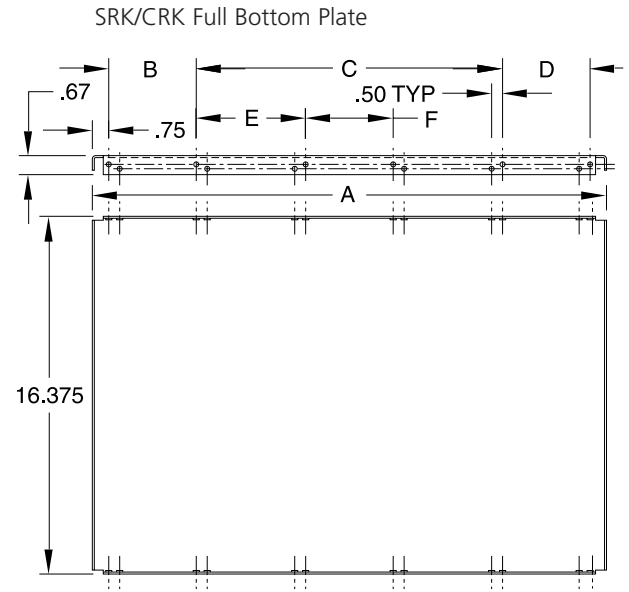
Part No.	A	B	C	D	E	F	G	H
FPE-3	3.47	.74	2.00	.23	3.00	-	-	3.34
FPE-5	5.22	1.11	3.00	1.48	2.25	-	-	5.09
FPE-7	6.97	1.21	4.56	1.48	4.00	-	-	6.84
FPE-8	8.72	1.14	6.44	1.48	5.75	-	-	8.59
FPE-10	10.47	2.02	6.44	1.48	7.50	3.73	3.00	10.34
FPE-12	12.22	1.61	9.00	1.48	9.25	4.98	2.25	12.09
FPE-14	13.97	2.49	9.00	1.48	11.00	5.48	3.00	13.84

SRK/CRK Flat Panel Ear



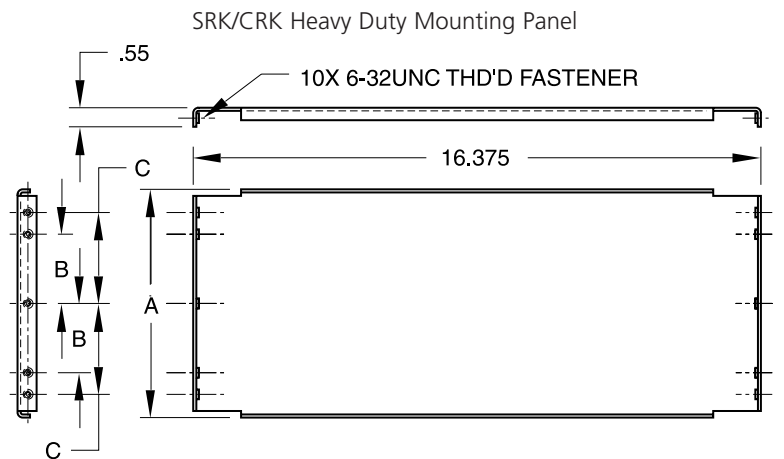
SRK/CRK Full Bottom Plate

Part No.	A	B	C	D	E	F
FBP-12D	11.50	3.00	4.00	3.00	-	-
FBP-15D	14.50	4.00	5.00	4.00	-	-
FBP-19D	18.50	4.50	8.00	4.50	4.00	-
FBP-24D	23.50	4.00	14.00	4.00	5.00	4.00



SRK/CRK Rear Panel (Heavy Duty Mounting Panel)

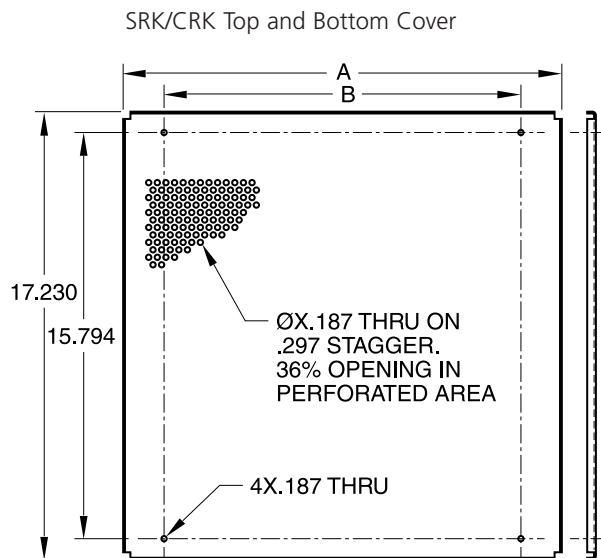
Part No.	A	B	C
HMP-3	3.09	.500	.875
HMP-5	4.84	.875	1.500
HMP-7	6.59	2.000	2.625
HMP-8	8.34	3.000	3.500
HMP-10	10.09	3.500	4.375
HMP-12	11.84	4.000	5.250
HMP-14	13.59	4.000	6.125



SRK/CRK Top & Bottom Covers

Part No.	A	B
PANC-12D	12.12	9.30
PANC-15D	15.12	12.30
PANC-19D	19.12	17.37
PANC-24D	24.12	21.30

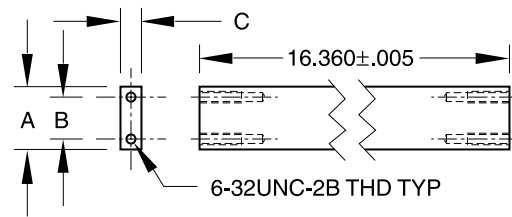
* Covers Available Without Perforations (Solid)



SRK/CRK Mounting Bars

Part No.	A	B	C
MB-25-0.75	.750	.500	.250
MB-25-1.50	1.500	1.250	.250
MB-50-0.75	.750	.500	.500
MB-50-1.50	1.500	1.250	.500

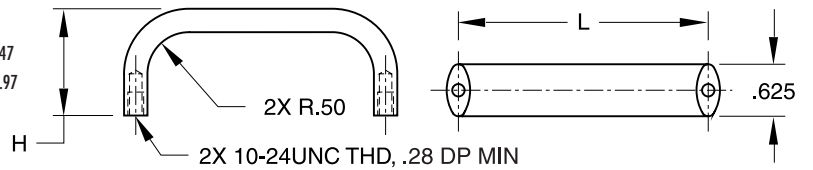
SRK/CRK Mounting Bar



SRK/CRK Handles

Part No.	Handle Height H	Hole Center L	Mates With Front Panel	Front Panel EIA Height (in.)
OSH-2	1.28	2.00	FP-3	3.47
OSH-3	1.28	3.00	FP-5	5.22
OSH-5	1.50	4.56	FP-7	6.97
OSH-7	1.75	6.44	FP-8,10	8.72,10.47
OSH-9	1.75	9.00	FP-12,14	12.22,13.97

SRK/CRK Handles



Slides

Ball Bearing Slides Part No.

QDLS-BB-16/22
QDLS-BB-20/26
QDLS-BB-24/30

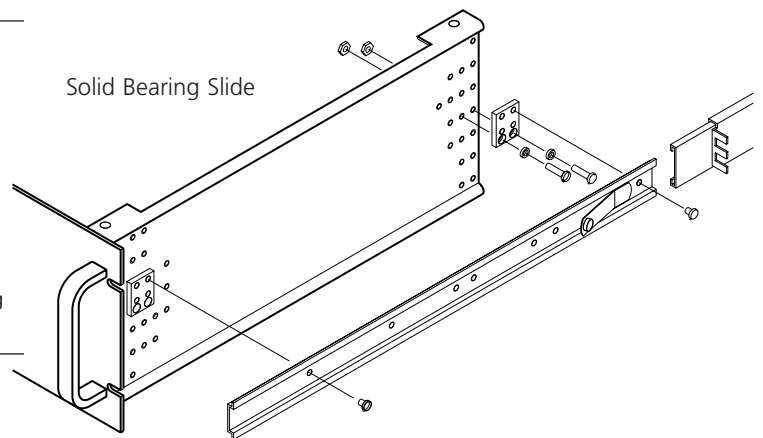
Solid Bearing Slides Part No.

QDLS-SB-16/22
QDLS-SB-20/26
QDLS-SB-24/30

Slide Selection Chart

Rack Depth	Applicable Enclosure Depth	Bearings	Part Number	Installation Depth Range	Slide Travel	Load Rating Lbs/Pair
16.00 to 20.00	12D or 15D	SB	QDLS-SB-16/22	16-22	17	90
		BB	QDLS-BB-16/22	16-22	19	120
20.00 to 26.00	12D or 15D or 19D	SB	QDLS-SB-20/26	20-26	21	85
		BB	QDLS-BB-20/26	20-26	23	120
24.00 to 30.00	12D or 15D or 19D or 24D	SB	QDLS-SB-24/30	24-30	25	85
		BB	QDLS-BB-24/30	24-30	27	100

Solid Bearing Slide



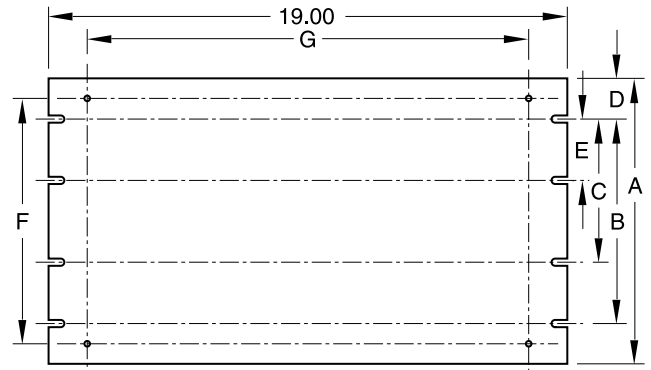
*SRK/CRK Card Cages & Card Cage Parts Available

BASIC KIT

Basic Kit Front Panel

Part No.	A	B	C	D	E	F	G	Usable Front Panel Space
BFP-1H	1.72	1.250	—	.235	—	—	16.67	16.17 X 1.18
BFP-3H	3.47	1.750	—	.860	—	3.000	16.17	15.57 X 2.22
BFP-5H	5.22	2.250	—	1.484	—	4.562	16.17	15.57 X 3.97
BFP-7H	6.97	4.000	—	1.484	—	6.437	16.17	15.57 X 5.72
BFP-8H	8.72	5.750	—	1.484	—	6.437	16.17	15.57 X 7.47
BFP-10H	10.47	7.500	5.250	1.493	2.250	9.000	16.17	15.57 X 9.22
BFP-12H	12.22	9.250	5.750	1.484	3.500	9.000	16.17	15.57 X 10.88

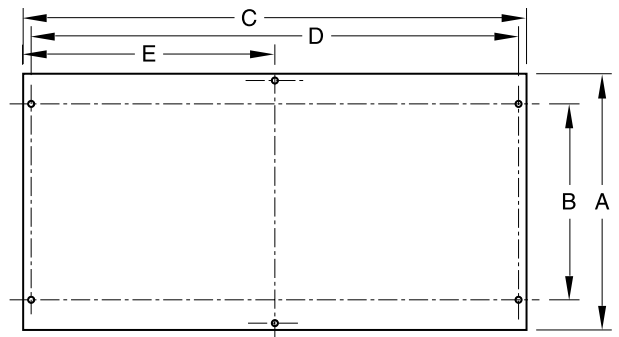
Basic Kit Front Panel



Basic Kit Rear Panel

Part No.	A	B	C	D	E
BRP-1H	1.56	—	17.170	16.670	—
BRP-3H	3.25	1.250	16.700	16.170	8.350
BRP-5H	5.00	3.000	16.700	16.170	8.350
BRP-7H	6.75	4.750	16.700	16.170	8.350
BRP-8H	8.50	6.500	16.700	16.170	8.350
BRP-10H	10.25	8.000	16.700	16.170	8.350
BRP-12H	11.99	9.750	16.700	16.170	8.350

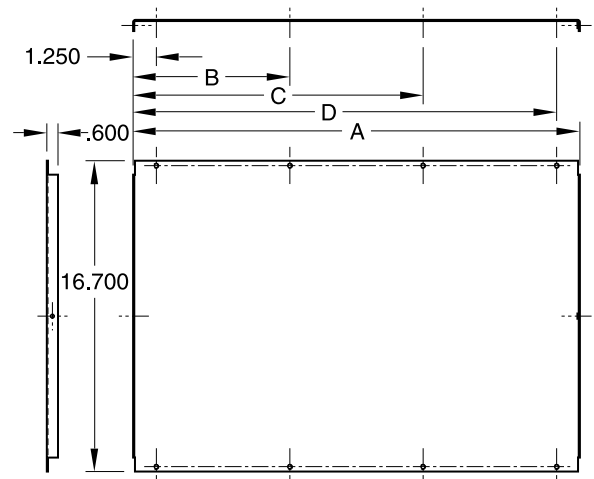
Basic Kit Rear Panel



Basic Kit Top & Bottom Covers (also available perforated) (solid covers available .090" thickness)

Part No.	A	B	C	D
BTBC-8D	8.000	4.000	6.750	—
BTBC-12D	12.000	6.000	10.750	—
BTBC-18D	18.000	9.000	16.750	—
BTBC-24D	24.000	8.420	15.580	22.750

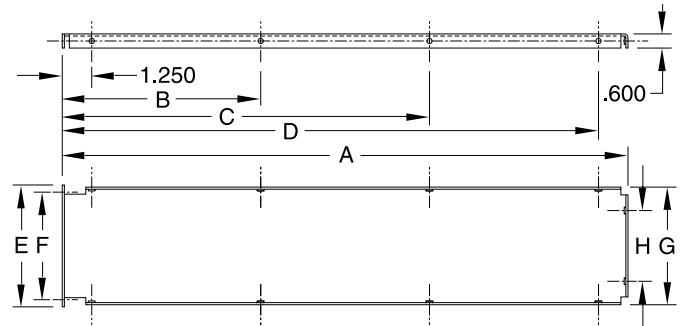
Basic Kit Top and Bottom Cover



Basic Kit Side Panels (also available with assembly holes)

Part No.	A	B	C	D	E	F	G	H
BSP-3H-8D	8.000	4.00	6.75	—	3.42	3.000	3.24	1.25
BSP-3H-12D	12.000	6.00	10.75	—	3.42	3.000	3.24	1.25
BSP-5H-12D	12.000	6.00	10.75	—	5.17	4.562	4.99	3.00
BSP-7H-12D	12.000	6.00	10.75	—	6.92	6.438	6.74	4.75
BSP-8H-12D	12.000	6.00	10.75	—	8.49	6.438	8.49	6.50
BSP-10H-12D	12.000	6.00	10.75	—	10.24	9.000	10.24	8.00
BSP-12H-12D	12.000	6.00	10.75	—	11.99	9.000	11.99	9.75
BSP-3H-18D	18.000	9.00	16.75	—	3.42	3.000	3.24	1.25
BSP-5H-18D	18.000	9.00	16.75	—	5.17	4.562	4.99	3.00
BSP-7H-18D	18.000	9.00	16.75	—	6.92	6.438	6.74	4.75
BSP-8H-18D	18.000	9.00	16.75	—	8.49	6.438	8.49	6.50
BSP-10H-18D	18.000	9.00	16.75	—	10.24	9.000	10.24	8.00
BSP-12H-18D	18.000	9.00	16.75	—	11.99	9.000	11.99	9.75
BSP-3H-24D	24.000	8.42	15.58	22.75	3.42	3.000	3.24	1.25
BSP-5H-24D	24.000	8.42	15.58	22.75	5.17	4.562	4.99	3.00
BSP-7H-24D	24.000	8.42	15.58	22.75	6.92	6.438	6.74	4.75
BSP-8H-24D	24.000	8.42	15.58	22.75	8.49	6.438	8.49	6.50
BSP-10H-24D	24.000	8.42	15.58	22.75	10.24	9.000	10.24	8.00
BSP-12H-24D	24.000	8.42	15.58	22.75	11.99	9.000	11.99	9.75

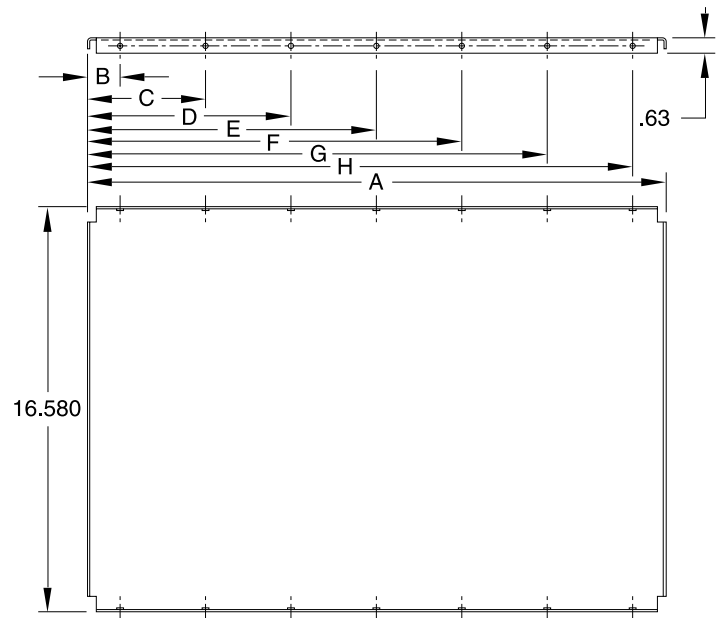
Basic Kit Side Panel



Basic Kit Chassis Base Plate

Part No.	A	B	C	D	E	F	G	H
BCBP-12D	11.71	1.335	5.710	10.085	—	—	—	—
BCBP-18D	17.71	3.250	6.750	10.250	13.750	—	—	—
BCBP-24D	23.71	1.335	4.835	8.335	11.835	15.335	18.835	22.335

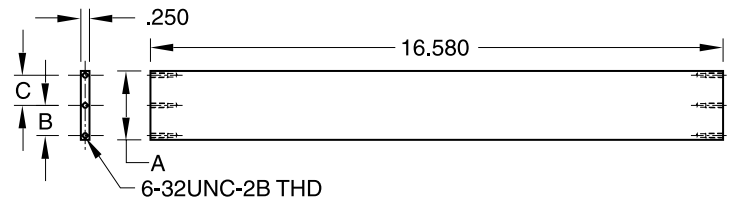
Basic Kit Chassis Base Plate



Basic Kit Mounting Bars

Part No.	A	B	C
BMB-.25X.75	.75	.438	-
BMB-.25X2.0	2.00	.875	.875

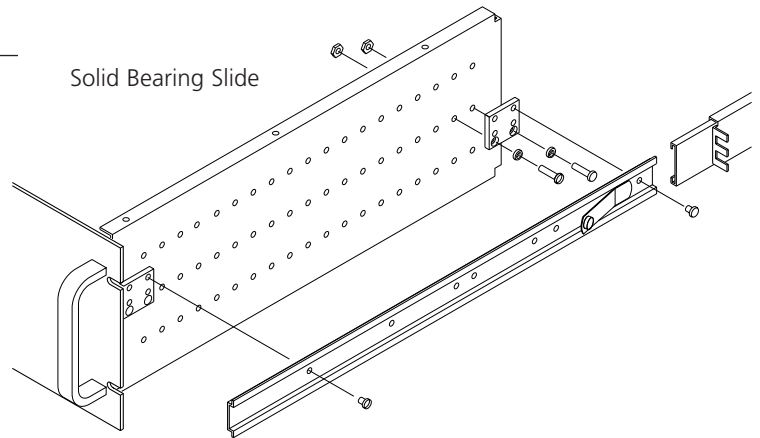
Basic Kit Mounting Bar



Slides

Ball Bearing Slides Part No.	Solid Bearing Slides Part No.
QDLS-BB-16/22	QDLS-SB-16/22
QDLS-BB-20/26	QDLS-SB-20/26
QDLS-BB-24/30	QDLS-SB-24/30

Solid Bearing Slide



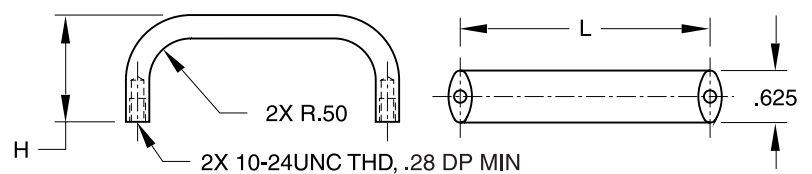
Slide Selection

Rack Depth	Applicable Enclosure Depth	Bearings	Part Number	Installation Depth Range	Slide Travel	Load Rating Lbs/Pair
16.00 to 20.00	12D or 15D	SB	QDLS-SB-16/22	16-22	17	90
		BB	QDLS-BB-16/22	16-22	19	120
20.00 to 26.00	12D or 15D or 19D	SB	QDLS-SB-20/26	20-26	21	85
		BB	QDLS-BB-20/26	20-26	23	120
24.00 to 30.00	12D or 15D or 19D or 24D	SB	QDLS-SB-24/30	24-30	25	85
		BB	QDLS-BB-24/30	24-30	27	100

Basic Kit Handles

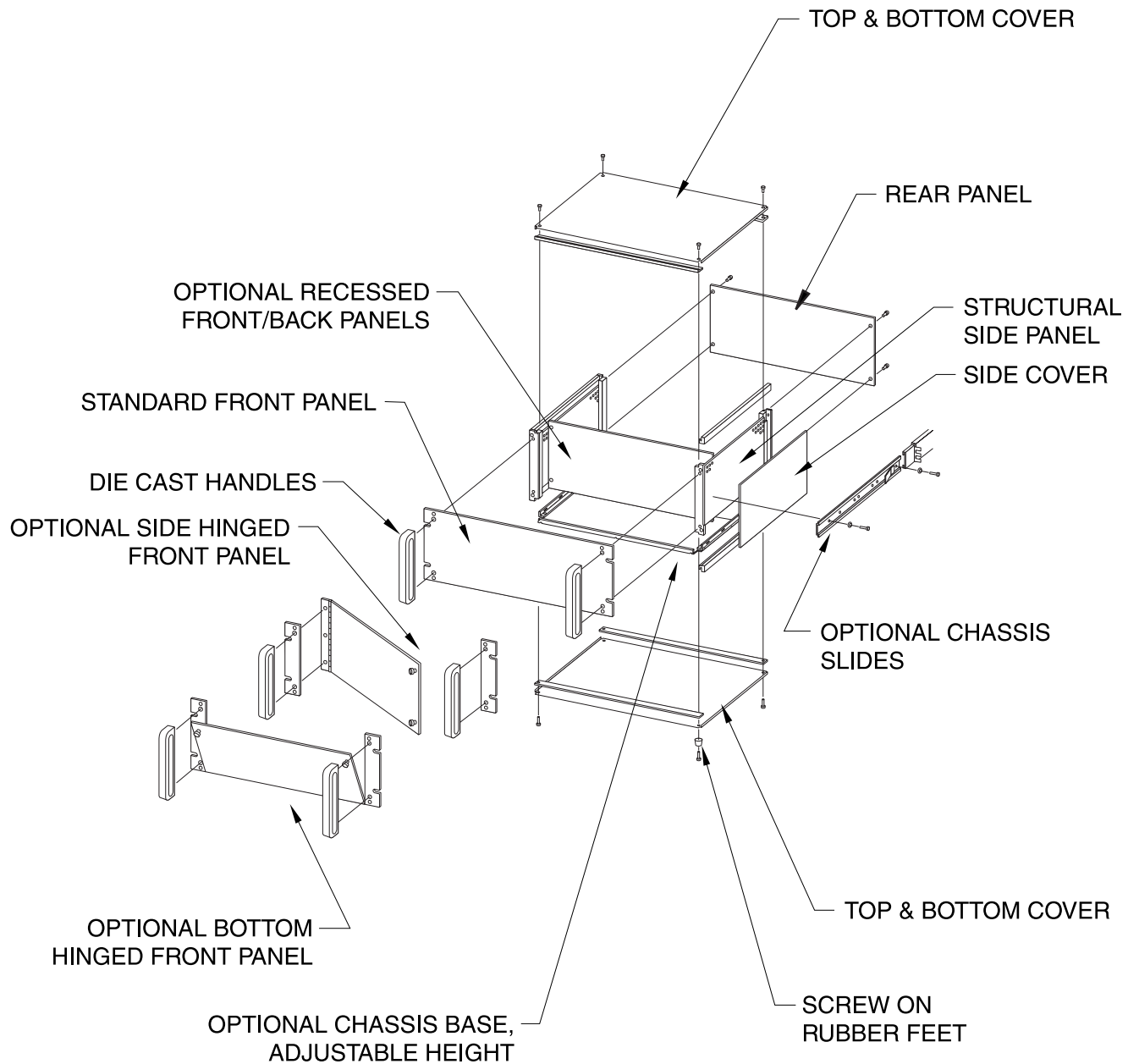
Handle Part No.	Height H	Hole Center L	Mates With Front Panel	Front Panel EIA Height (in.)
OSH-3	1.28	3.00	BFP-3H	3.47
OSH-5	1.50	4.56	BFP-5H	5.22
OSH-7	1.75	6.44	BFP-7H, BFP-8H	6.97, 8.72
OSH-9	1.75	9.00	BFP-10H, BFP-12H	10.47, 12.22

Basic Kit Handles

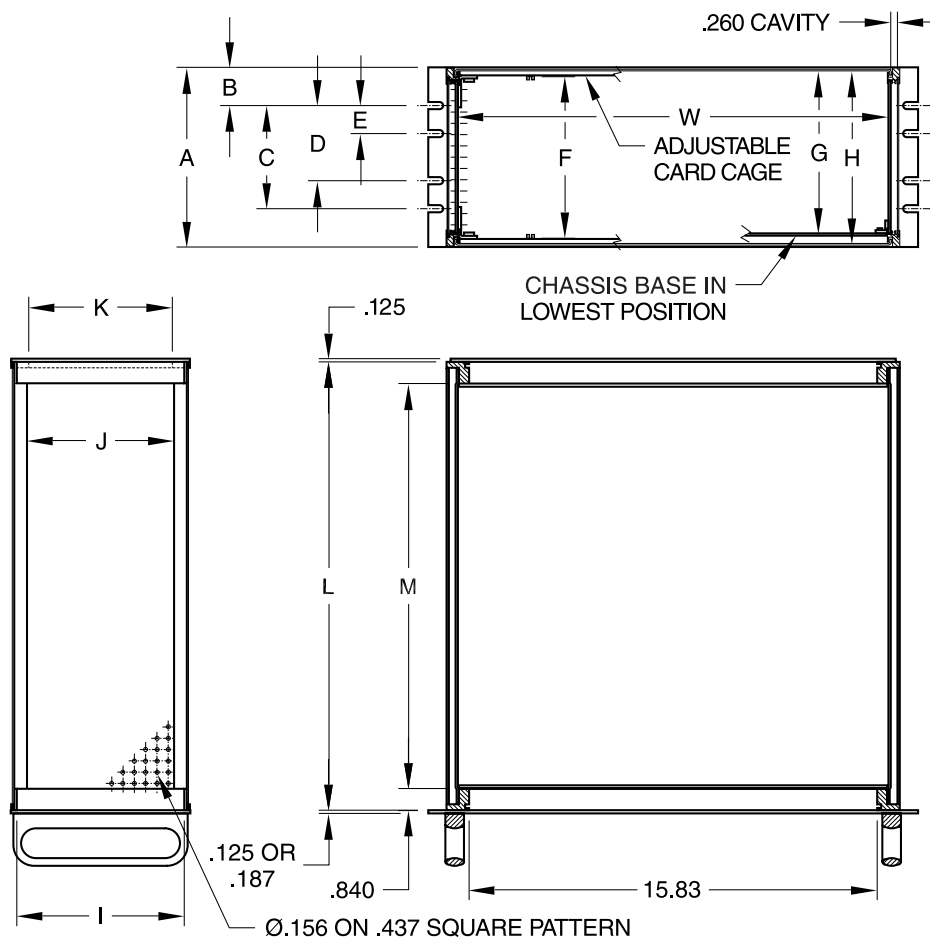


VCD/VSA Exploded View

The following pages delineate essential enclosure component drawings and charts related to the VCD & VSA chassis parts and accessories. These drawings are also available, for your convenience, in AutoCAD and PDF formats.



Basic VCD Assembly



Heights

EIA Units Dash H Code	2 -3	3 -5	4 -7	5 -8	6 -10	7 -12	8 -14
A Front Panel	3.47	5.22	6.97	8.72	10.47	12.22	13.97
B F/P Ear Notches	.234	1.484	1.484	1.484	1.484	1.484	1.484
C FP/Ear Notches	3.00	2.25	4.00	5.75	7.50	9.25	11.00
D FP/Ear Notches	-	-	-	-	5.25	5.75	7.00
E FP/Ear Notches	-	-	-	-	2.25	3.50	4.00
F Max Card Width*	2.74	4.49	6.24	7.99	9.74	11.49	13.24
G Top Cover To CBA**	2.30	4.50	6.25	8.00	9.75	11.50	13.25
H Cover To Cover	3.08	4.83	6.58	8.33	10.08	11.83	13.58
I TFM To TFM	2.99	4.74	6.49	8.24	9.99	11.74	13.49
J LFM To LFM	2.20	3.95	5.70	7.45	9.20	10.95	12.70
K VFM.B.S. Notch	2.06	3.81	5.56	7.31	9.06	10.81	12.56

Depths

Dash D Codes	-10	-13	-17	-22
L Depth without front and back panels	10.39	13.89	17.39	22.64
M VFM to VFM	8.71	12.21	15.71	20.96
N Die Cast Handle overall depth 1.76				

Widths

W Width (Internal)	
With SSPs in inner slots in LFM	16.70
With one SSP in inner slot and one SSP in outer slot in LFM	17.00
With SSPs in outer slots in LFM	17.29
Overall Max Width	
Outer LFM to outer LFM	17.58
Outer LFM.S to outer LFM.S	16.99

Dimensions in inches, nominal

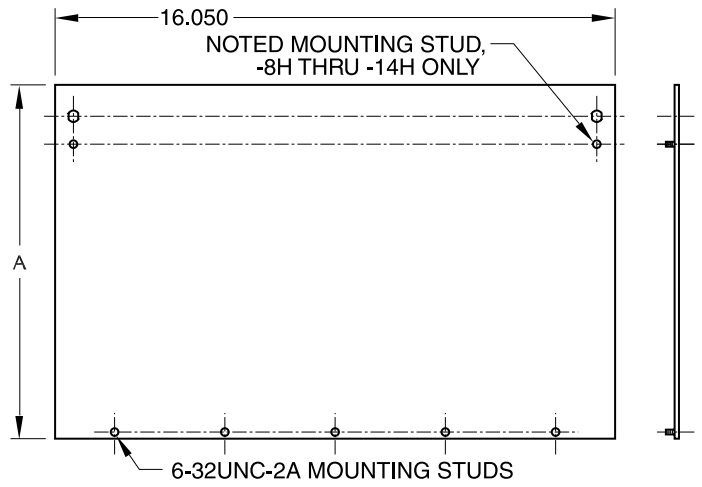
* With covers on. With covers off add .11

** MAX

VCD/VSA Bottom Hinged Front Panel

Part No.	A
BHFP-3H	3.140
BHFP-5H	4.890
BHFP-7H	6.640
BHFP-8H	8.390
BHFP-10H	10.140
BHFP-12H	11.890
BHFP-14H	13.640

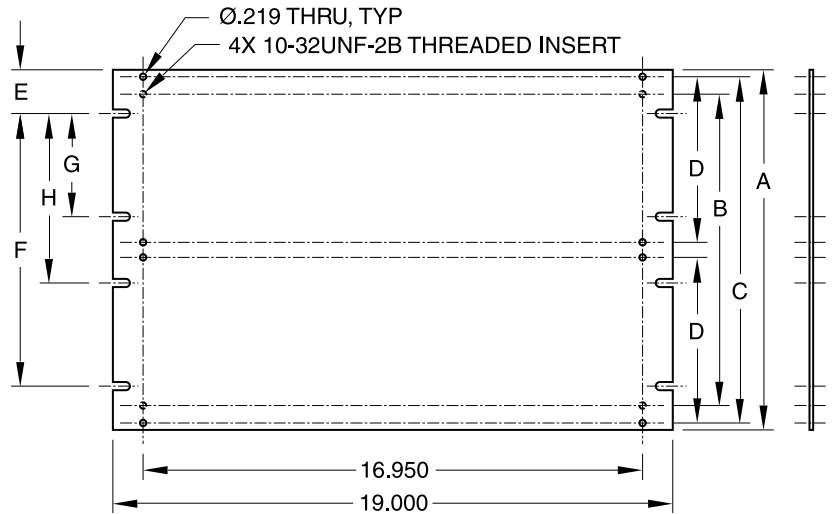
VCD/VSA Bottom Hinged Front Panel



VCD/VSA Standard Front Panel

Part No.	A	B	C	D	E	F	G	H
SFP-3H	3.470	1.815	3.000	-	.234	3.000	-	-
SFP-5H	5.220	3.565	4.750	-	1.484	2.250	-	-
SFP-7H	6.970	5.315	6.500	-	1.484	4.000	-	-
SFP-8H	8.720	7.065	8.250	-	1.484	5.750	-	-
SFP-10H	10.470	8.815	10.000	4.750	1.484	7.500	2.250	5.250
SFP-12H	12.220	10.565	11.750	5.620	1.484	9.250	3.500	5.750
SFP-14H	13.970	12.315	13.500	6.500	1.484	11.000	4.000	7.000

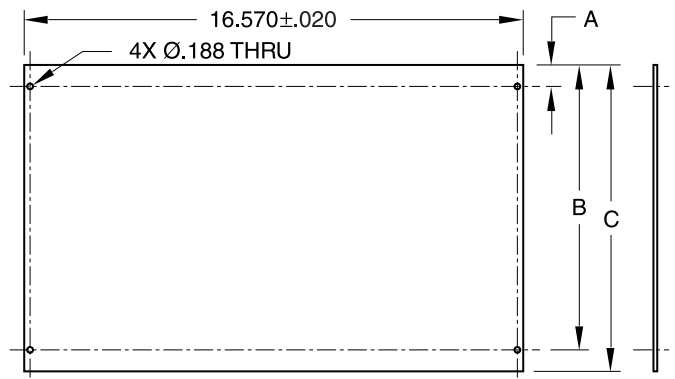
VCD/VSA Standard Front Panel



VCD/VSA Recessed Front/Back/Outside Back Panel

Part No.	A	B	C
RFBOBP-3H	.713	2.462	3.175
RFBOBP-5H	.713	4.212	4.925
RFBOBP-7H	.713	5.962	6.675
RFBOBP-8H	.713	7.712	8.425
RFBOBP-10H	.713	9.462	10.175
RFBOBP-12H	.713	11.212	11.925
RFBOBP-14H	.713	12.962	13.675

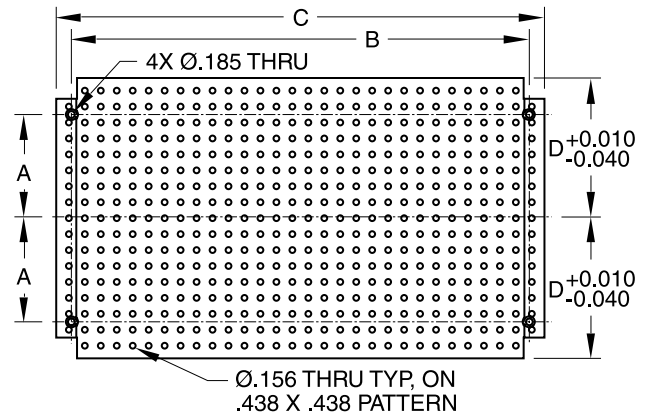
VCD/VSA Recessed Front/Back/Outside Back Panel



VCD/VSA Structural Side Panels
(also available solid without perforations)

Part No.	A	B	C	D
SSP-3H-10D	.219	9.050	9.880	1.222
SSP-3H-13D	.219	12.550	13.380	1.222
SSP-3H-17D	.219	16.050	16.880	1.222
SSP-3H-22D	.219	21.300	22.130	1.222
SSP-5H-10D	1.094	9.050	9.880	2.097
SSP-5H-13D	1.094	12.550	13.380	2.097
SSP-5H-17D	1.094	16.050	16.880	2.097
SSP-5H-22D	1.094	21.300	22.130	2.097
SSP-7H-10D	1.969	9.050	9.880	2.972
SSP-7H-13D	1.969	12.550	13.380	2.972
SSP-7H-17D	1.969	16.050	16.880	2.972
SSP-7H-22D	1.969	21.300	22.130	2.972
SSP-8H-10D	2.844	9.050	9.880	3.847
SSP-8H-13D	2.844	12.550	13.380	3.847
SSP-8H-17D	2.844	16.050	16.880	3.847
SSP-8H-22D	2.844	21.300	22.130	3.847
SSP-10H-10D	3.719	9.050	9.880	4.722
SSP-10H-13D	3.719	12.550	13.380	4.722
SSP-10H-17D	3.719	16.050	16.880	4.722
SSP-10H-22D	3.719	21.300	22.130	4.722
SSP-12H-10D	4.594	9.050	9.880	5.597
SSP-12H-13D	4.594	12.550	13.380	5.597
SSP-12H-17D	4.594	16.050	16.880	5.597
SSP-12H-22D	4.594	21.300	22.130	5.597
SSP-14H-10D	5.469	9.050	9.880	6.472
SSP-14H-13D	5.469	12.550	13.380	6.472
SSP-14H-17D	5.469	16.050	16.880	6.472
SSP-14H-22D	5.469	21.300	22.130	6.472

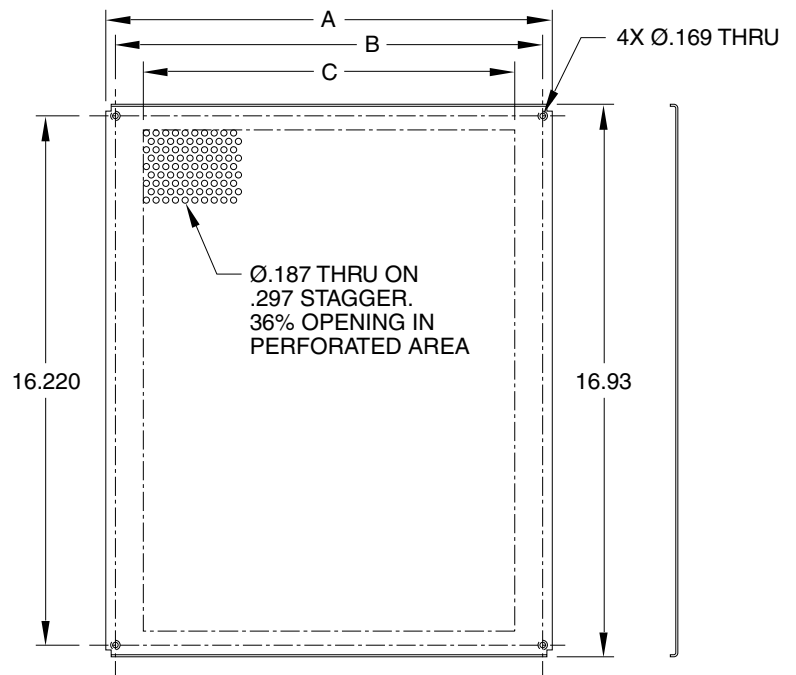
VCD/VSA Structural Side Panel



VCD/VSA Top & Bottom Covers

Part No.	A	B	C
T/BC.P-10D	10.180	9.590	8.65
T/BC.P-13D	13.680	13.090	11.91
T/BC.P-17D	17.180	16.590	14.88
T/BC.P-22D	22.430	21.840	20.52
T/BC.OTP-10D	10.180	9.590	3.01
T/BC.OTP-13D	13.680	13.090	4.49
T/BC.OTP-17D	17.180	16.590	5.98
T/BC.OTP-22D	22.430	21.840	7.46
T/BC.NP-10D	10.180	9.590	-
T/BC.NP-13D	13.680	13.090	-
T/BC.NP-17D	17.180	16.590	-
T/BC.NP-22D	22.430	21.840	-

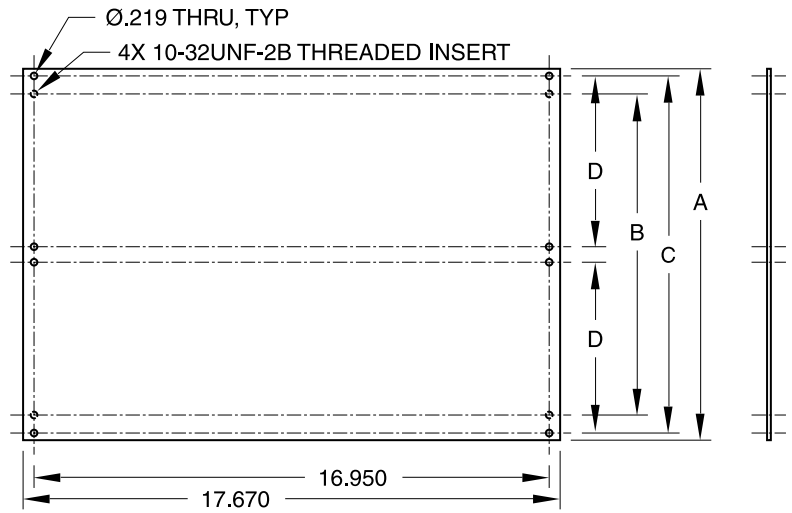
VCD/VSA Top & Bottom Cover



VCD/VSA Outside Front Panel

Part No.	A	B	C	D
OFF-3H	3.470	1.815	3.000	-
OFF-5H	5.220	3.565	4.750	-
OFF-7H	6.970	5.315	6.500	-
OFF-8H	8.720	7.065	8.250	-
OFF-10H	10.470	8.815	10.000	4.750
OFF-12H	12.220	10.565	11.750	5.620
OFF-14H	13.970	12.315	13.500	6.500

VCD/VSA Outside Front Panel



VCD/VSA Back Panel Fan Cutouts

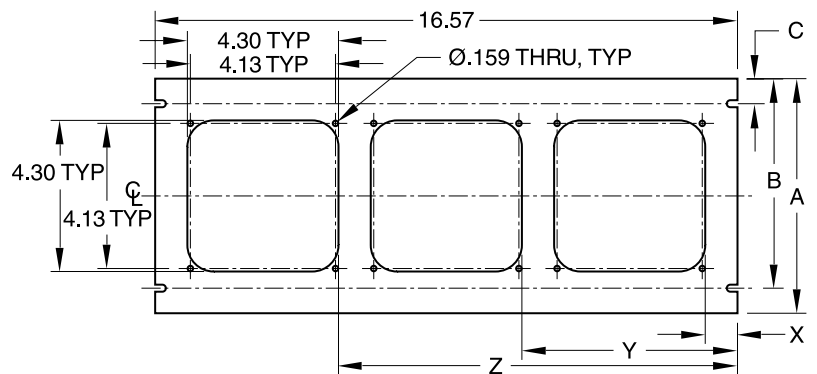
Chart 1, Panel Height Dims

Panel Height	A	B	C
-5H	4.925	4.212	.713
-7H	6.675	5.962	.713

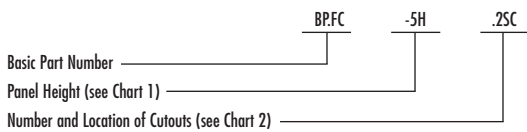
Chart 2, Fan Locations

Dot No.	X	Y	Z
.1S	.918	-	-
.1C	-	6.135	-
.2S	.918	-	11.353
.2SC	.918	6.135	-
.3	.918	6.135	11.353

VCD/VSA Back Panel with Fan Cutouts



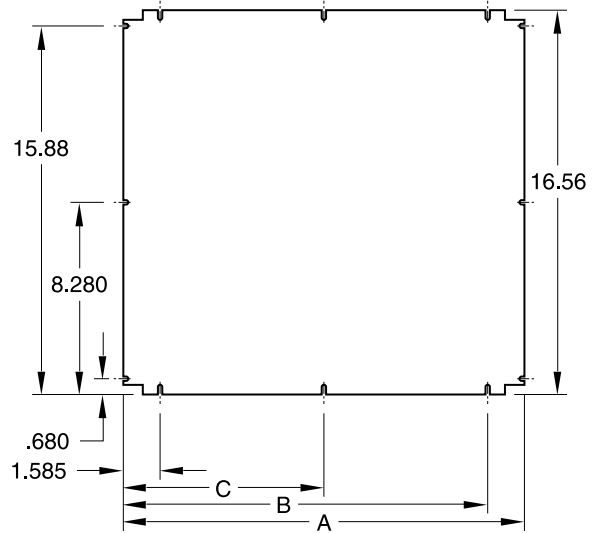
Part Number Development



VCD/VSA Chassis Base for Outside Panels

Part No.	A	B	C
CB.O-10D	10.300	8.715	5.150
CB.O-13D	13.800	12.215	6.900
CB.O-17D	17.300	15.715	8.650
CB.O-22D	22.550	20.965	11.275

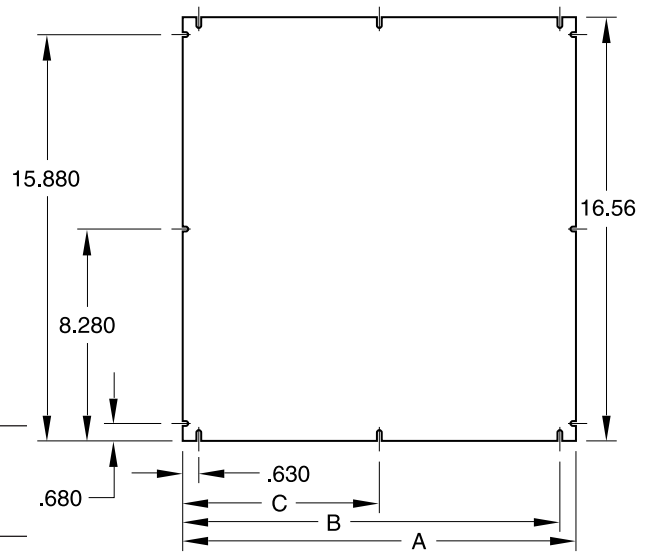
VCD/VSA Chassis Base for Outside Panels



VCD/VSA Chassis Base for Recessed Panels

Part No.	A	B	C
CB.R-10D	8.390	7.760	4.195
CB.R-13D	11.890	11.260	5.945
CB.R-17D	15.390	14.760	7.695
CB.R-22D	20.640	20.010	10.320

VCD/VSA Chassis Base for Recessed Panels

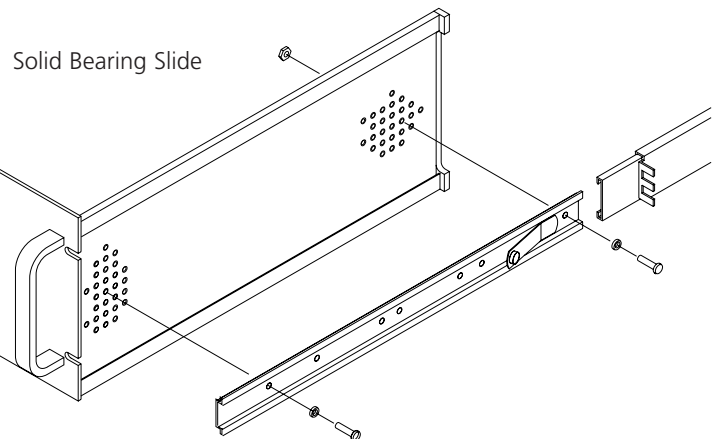


Slides

Ball Bearing Slides Part No.	Solid Bearing Slides Part No.
QDLS-BB-16/22	QDLS-SB-16/22
QDLS-BB-20/26	QDLS-SB-20/26
QDLS-BB-24/30	QDLS-SB-24/30

Slide Selection Chart

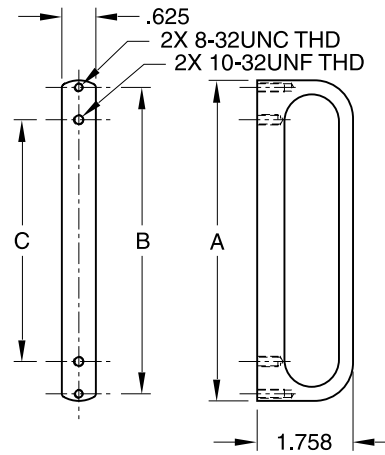
Rack Depth	Applicable Enclosure Depth	Bearings	Part Number	Installation Depth Range	Slide Travel	Load Rating Lbs/Pair
16.00 to 20.00	12D or 15D	SB	QDLS-SB-16/22	16-22	17	90
		BB	QDLS-BB-16/22	16-22	19	120
20.00 to 26.00	12D or 15D or 19D	SB	QDLS-SB-20/26	20-26	21	85
		BB	QDLS-BB-20/26	20-26	23	120
24.00 to 30.00	12D or 15D or 19D or 24D	SB	QDLS-SB-24/30	24-30	25	85
		BB	QDLS-BB-24/30	24-30	27	100



VCD/VSA Die Cast Handles

Part No.	A	B	C
DCH-3H	3.260	3.000	1.815
DCH-5H	5.010	4.750	3.565
DCH-6H	5.880	5.620	4.435
DCH-7H	6.760	6.500	5.315
DCH-8H	8.510	8.250	7.065

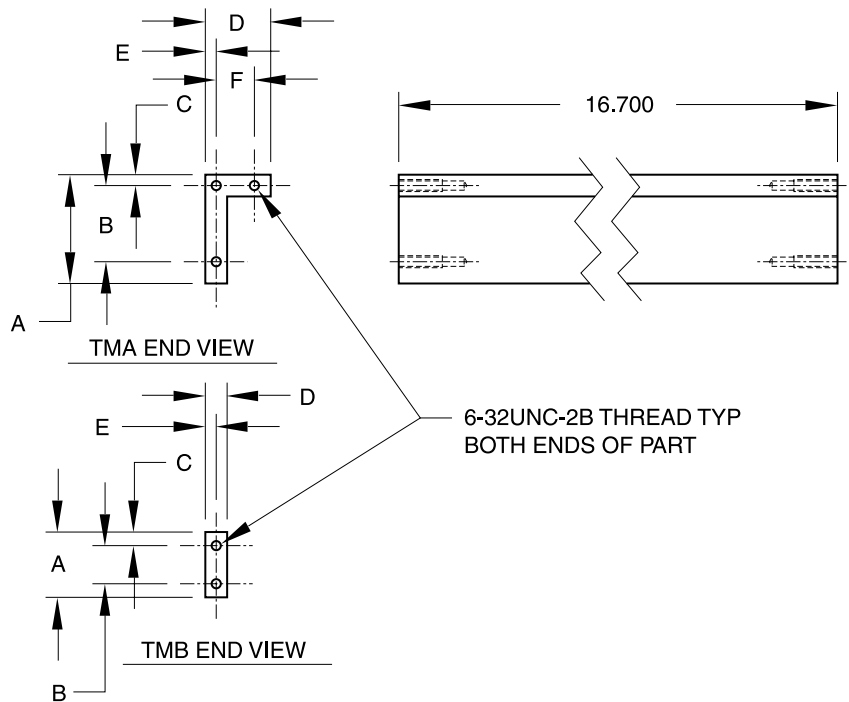
VCD/VSA Handles



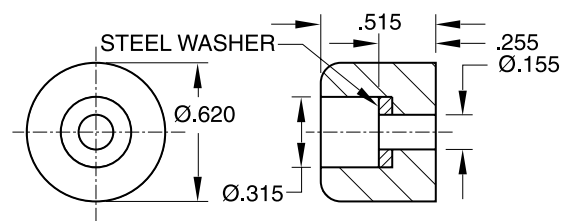
VCD/VSA Mounting Bars & Angles

Part No.	A	B	C	D	E	F
TMA-.25X.75X1.25	1.250	.875	.125	.750	.125	.438
TMB-.25X.75	.750	.438	.156	.250	.125	-

VCD/VSA Mounting Bars & Angles



Rubber Feet



■ Thank you for your interest in

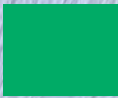
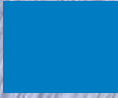
Techmar's extensive product line. Call our knowledgeable staff to assist you in selecting the correct enclosure for your current and future applications. Your satisfaction is our business and we back every order with superior service.

310.280.1299 800.832.4627

Fax: 310.280.1037

sales@techmar-enclosures.com

Website: www.techmar-enclosures.com





3627 W. Jefferson Blvd. Unit B • Los Angeles, CA 90016 • 310.280.1299 • 800.832.4627 • fax 310.280.1037